

# EXPLODED VIEW & PARTS LISTING

## Air Operated Double Diaphragm Pump

Model: G25AT11

Part # 854997



### To Purchase:

☎ 800-990-7867

✉ sales@yamadapump.com

📍 Find My Rep

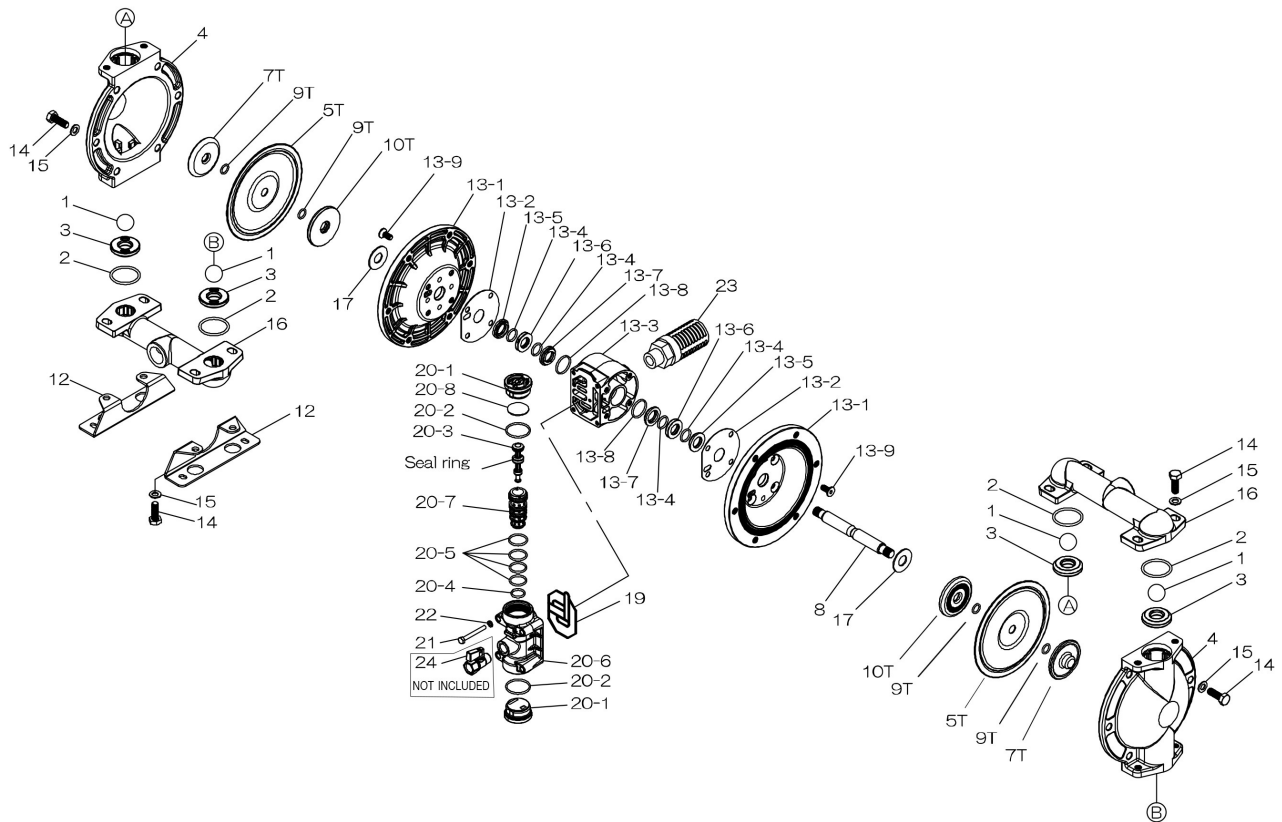
### More Information:

▶ YouTube: @yamadapump

🌐 yamadapump.com

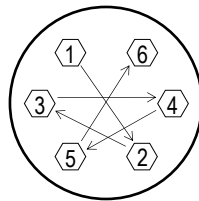
Data Sheets | CAD Drawings | Manuals  
Literature | BOM | Performance Curves

### Trial Program



Air Operated Double Diaphragm Pump

REF. No.	PART No.	DESCRIPTION	QTY.	REORDER
1	770736	BALL	4	
2	643041	O-RING	4	
3	717246	VALVE SEAT	4	
4	716959	OUT CHAMBER	2	
5T	771110	DIAPHRAGM	2	
7T	717095	CENTER DISK (LIQUID SIDE)	2	
8	717225	CENTER ROD	1	
9T	643013	O-RING	4	
10T	717226	CENTER DISK (AIR SIDE)	2	
12	717031	BASE	2	
13	<b>805262</b>	<b>BODY ASSY.</b>	1	
13-1	717223	AIR CHAMBER	2	
13-2	773441	GASKET	2	
13-3	717219	BODY	1	
13-4	640016	O-RING	4	
13-5	773452	GUIDE BUSHING C	2	
13-6	773451	GUIDE BUSHING B	2	
13-7	773450	GUIDE BUSHING A	2	
13-8	683112	O-RING	2	
13-9	682486	BOLT FLAT HD W/WASHER	8	
14	611175	BOLT	20	
15	631917	WAVE WASHER	20	
16	717218	MANIFOLD NPT	2	
17	771054	CUSHION	2	
19	773440	GASKET	1	
20	<b>805265</b>	<b>VALVE BODY ASSY.</b>	1	
20-1	716917	CAP A	2	
20-2	686734	O-RING	2	
20-3	805208	SPOOL ASSY.	1	
20-4	685453	O-RING	1	
20-5	771080	O-RING	4	
20-6	717222	VALVE BODY	1	
20-7	780322	SLEEVE	1	
20-8	773280	CUSHION	1	
21	611111	BOLT	4	
22	631915	WAVE WASHER	4	
23	804697	MUFFLER	1	
KIT	KG25-AT	LIQUID END KIT		
KIT	KG25-AM-M	AIR MOTOR KIT		



**Tightening torque for center rod and out chambers.**  
 Center Rod 354 in-lbf {40 N-m}  
 Out Chambers 177 in-lbf {20 N-m}

**Tightening torque for manifold retainer bolts or nuts.**  
 G25AT 177 in-lbf {20 N-m}

**General Tools:**

- Socket wrench - 10mm, 17mm
- Hexagonal box wrenches - 5mm
- Open-end wrenches - 10mm, 13mm, 17mm

**Special Tools (sold separately):**

- Cap & disc remover (771132).
- Sleeve remover (713148).

**Miscellaneous:**

- Assembly Oil - turbine oil class 1 (equivalent to ISO VG32 grade)
- Nuts - M14 x 1.5 class 3
- Urea grease grade (NLGI) No. 2

Customer Notes	
Model #:	_____
Description:	_____
Serial #:	_____
Date Installed:	_____
Department Location:	_____
Tag/Project:	_____